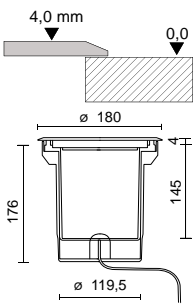
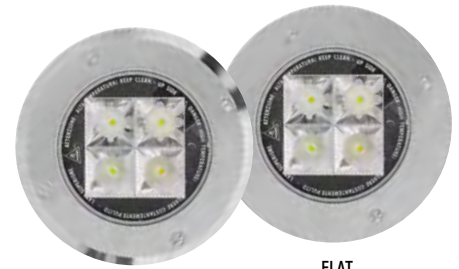


OLODUM-RULED MIDI PROOF TONDO

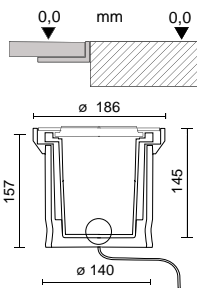
- Corpo in materiale polimerico.
- Anello di finitura in acciaio Inox (AISI 316L).
- Alta resistenza ambiente marino o ad alta salinità.
- Pressacavo in poliammide PG7.
- Vetro temperato di spessore 10 mm.
- Completo di cassaforma.

- Body in polymeric material.
- Stainless steel (AISI 316L) frame.
- High resistance to marine and heavy salt environments.
- PG7 cable gland of polyamide.
- Tempered glass 10 mm thick.
- Housing included.



	LED							SISTEMA-SYSTEM		
	W	lm	V	K	CRI	T	IP	W	lm	lm/W
Inox E8272-LBC-12 E8272-LBN-12				3000 4000					942 997	99 105
Inox E8272-LBC-55 E8272-LBN-55				3000 4000					821 869	86 91
Inox E8272-LBC-75 E8272-LBN-75	8,5W	1115 1180	220-240V (350mA)	3000 4000	>80	42°	• •	9,5W	927 981	98 103
Inox E8272-LBC-ASI E8272-LBN-ASI				3000 4000					914 967	96 102
Inox E8272-LBC-AE E8272-LBN-AE				3000 4000					618 655	65 69
versione - version FLAT										
Inox E8272F-LBC-12 E8272F-LBN-12				3000 4000					942 997	99 105
Inox E8272F-LBC-55 E8272F-LBN-55				3000 4000					821 869	86 91
Inox E8272F-LBC-75 E8272F-LBN-75	8,5W	1115 1180	220-240V (350mA)	3000 4000	>80	42°	• •	9,5W	927 981	98 103
Inox E8272F-LBC-ASI E8272F-LBN-ASI				3000 4000					914 967	96 102
Inox E8272F-LBC-AE E8272F-LBN-AE				3000 4000					618 655	65 69

versione - version FLAT



OP. A richiesta - On request: **CRI >90**

...TSC TORX Viti di sicurezza - Safety screws

Cavo di alimentazione con dispositivo anti-traspirazione acqua
Power cable with anti-transpiration device

ACC. **645230** Connettore IP68 ø da 7 a 10mm - IP68 connector ø from 7 to 10mm

646636 Connettore IP68 a "T" ø da 7 a 10mm per file continue
T-shaped IP68 connector to ø from 7 to 10mm for continuous line

NUOVO MATERIALE TERMOPLASTICO SUPER RESISTENTE
NEW THERMOPLASTIC MATERIAL SUPER RESISTANT



Velocità max carrabilità 20 km-h
Drive-over max speed 20 km-h

Carico statico 2000 kg
Static load 2000 kg

outside



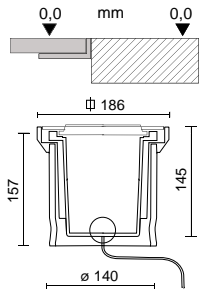
- Corpo in materiale polimerico.
- Anello di finitura in acciaio Inox (AISI 316L).
- Alta resistenza ambiente marino o ad alta salinità.
- Pressacavo in poliammide PG7.
- Vetro temperato di spessore 10 mm.
- Completo di cassaforma.

- Body in polymeric material.
- Stainless steel (AISI 316L) frame.
- High resistance to marine and heavy salt environments.
- PG7 cable gland of polyamide.
- Tempered glass 10 mm thick.
- Housing included.



FLAT

versione - version FLAT




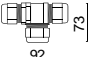
	LED							SISTEMA-SYSTEM		
	W	lm	V	K	CRI	T	IP	W	lm	lm/W
Inox E8277F-LBC-12 E8277F-LBN-12				3000 4000					942 997	99 105
Inox E8277F-LBC-55 E8277F-LBN-55				3000 4000					821 869	86 91
Inox E8277F-LBC-75 E8277F-LBN-75	8,5W	1115 1180	220-240V (350mA)	3000 4000	>80	42°	• •	9,5W	927 981	98 103
Inox E8277F-LBC-ASI E8277F-LBN-ASI				3000 4000					914 967	96 102
Inox E8277F-LBC-AE E8277F-LBN-AE				3000 4000					618 655	65 69

OP. A richiesta - On request: **CRI >90**

...-TSC TORX Viti di sicurezza - Safety screws

Cavo di alimentazione con dispositivo anti-traspirazione acqua
Power cable with anti-transpiration device

ACC. **645230** Connettore IP68 ϕ da 7 a 10mm - IP68 connector ϕ from 7 to 10mm 

646636 Connettore IP68 a "T" ϕ da 7 a 10mm per file continue
T-shaped IP68 connector to ϕ from 7 to 10mm for continuous line 

NUOVO MATERIALE TERMOPLASTICO SUPER RESISTENTE
NEW THERMOPLASTIC MATERIAL SUPER RESISTANT



IK 10
IP 67



Velocità max carrabilità 20 km-h
Drive-over max speed 20 km-h

Carico statico 2000 kg
Static load 2000 kg

