





## IVELA TRACK SYSTEMS

L3 Recessed & Surface & DALI

The Ivela Track System track range includes dimmable & three-phase tracks able to fit with different lighting demands in a flexible way. Tracks are designed to be easily installed on the ceiling, on the wall or recessed, for use with spotlights or with suspended fittings.

An easy and quick installation allows you to change the lighting layout at any time, avoiding expensive works, to provide dynamic solutions for the needs of different spaces.



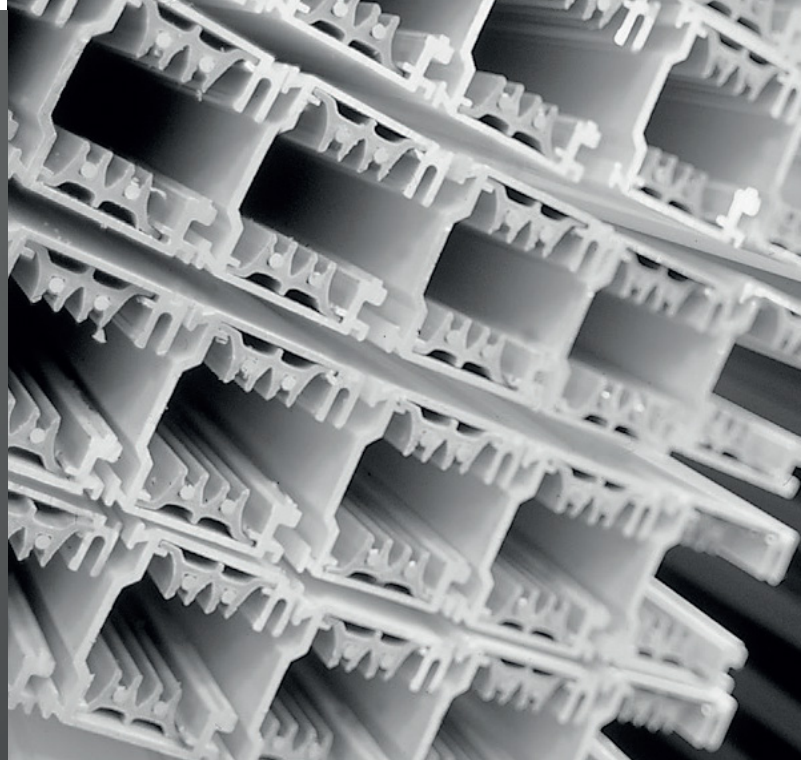
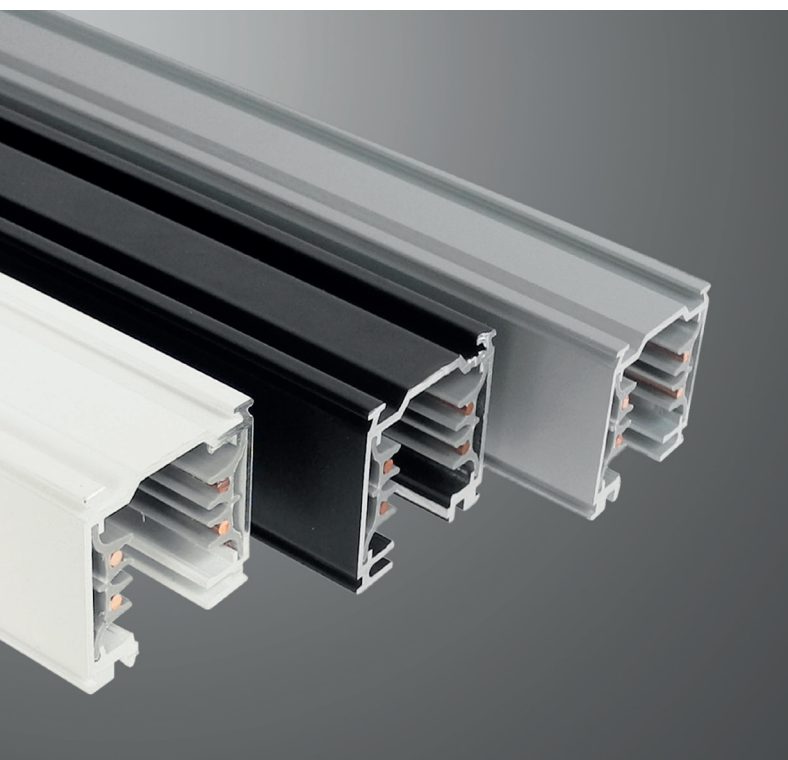


## TECHNICAL SPECIFICATIONS

Electrified tracks are made of extruded aluminium alloy. The copper wires are located inside extruded PVC profiles with high insulating properties. They are certified and comply with current standards (EN 60570).

A wide range of joiners and accessories are available.





## THREE CIRCUIT IVELA TRACK SYSTEMS

All three circuit tracks are designed so that each circuit shares a common neutral. ie. L1+N, L2+N,L3+N

Note:

1. Metal halide products are currently unsuitable for dimming.
2. If a common neutral is shared by other sources which are being dimmed, damage may occur to electronic ballasts.

LED, COMPACT FLUORESCENT OR HALOGEN CANNOT BE MIXED ON THE SAME THREE CIRCUIT TRACK IF DIMMING THE LED, COMPACT FLUORESCENT OR HALOGEN

Ivela Track Systems

- Polarised 16amp three circuit track system with a common neutral
- Suitable for use with other European three circuit adaptors
- Each of the three circuits can be independently dimmed
- Couplers and feeds are pre-wired and polarised for ease of installation
- Broad range of universal suspensions
- Polarised and fully earthed to latest international standards
- When dimming, other circuits cannot contain non-dimmable luminaires such as metal halide
- Compatible with Ivela, Nordic, Staff, Euro Track, Lival, Crompton

# ELECTRIFIED TRACKS

## Continuity of the Earthing

For a correct installation of all the accessories in a three-phase track composition, the continuity of the earthing between each element has the highest importance. The earth conductors of each component must be positioned consistently.



Live-end with earth on the left L  
Live-end with earth on the right



1 Outside L joint



2 Inside L joint



3 Right live-end



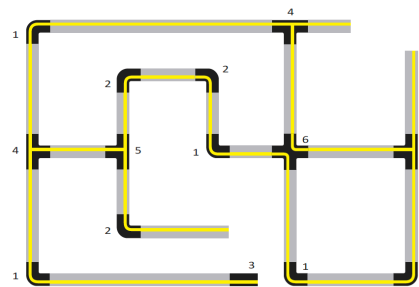
4 Right I joint



5 Left T joint

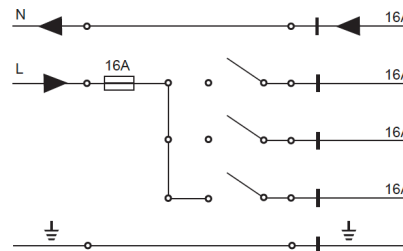


x joint

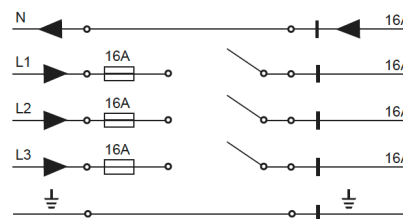


## Wiring Diagrams

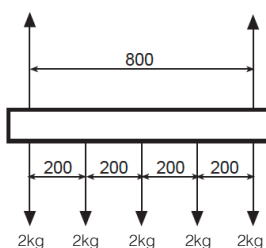
The connections to a single phase 230/250V mains allows a total load of 16A, corresponding to 3680/4000 Watt, which can be divided among 3 circuits.



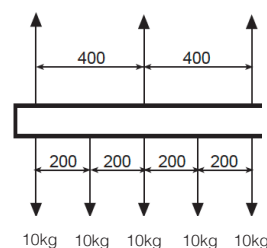
The connection to a three-phase 230/400V electricity mains allows a total load of 16A, corresponding to 11040 Watt, which can be divided among 3 circuits (3x3680 Watt).



## Load Capacity



LKM three-phase tracks have a load capacity of 2 Kg every 200 mm, with a maximum distance of 800 mm between the fixing points.

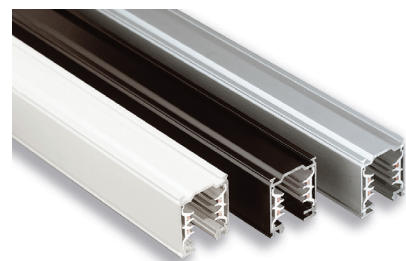


For a 10 Kg load every 200 mm, a maximum fixing distance of 400 mm is recommended.

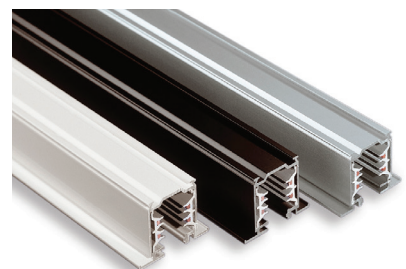


## IVELA TRACK SYSTEMS THREE PHASE

Ivela Track Systems is a system of three-phase track with three circuits, available in 4 different lengths for installation on the ceiling or on the wall. The range, which also includes recessed tracks, is suitable for several installation needs. The complete range of accessories makes Ivela Track Systems extremely flexible and versatile in lighting design.



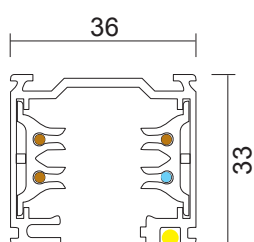
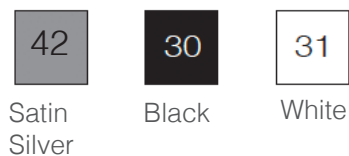
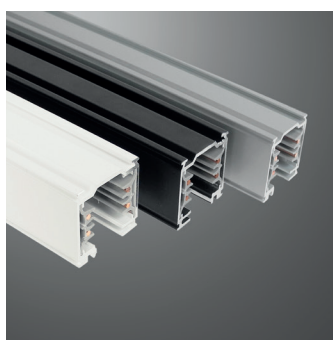
Surface



Recessed



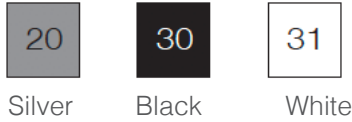
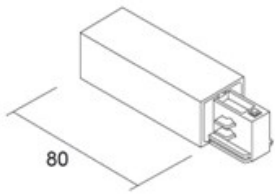
## SURFACE MOUNT AND SUSPENDED SYSTEMS



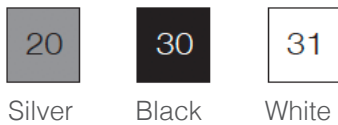
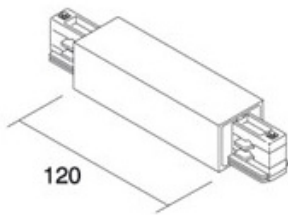
Item	Item Code	Description
IV-7511-10-30	7511-10-30	3 CT TRACK SQUARE 1M BLACK
IV-7511-10-31	7511-10-31	3 CT TRACK SQUARE 1M WHITE
IV-7511-10-42	7511-10-42	3 CT TRACK SQUARE 1M SILVER
IV-7511-20-30	7511-20-30	3 CT TRACK SQUARE 2M BLACK
IV-7511-20-31	7511-20-31	3 CT TRACK SQUARE 2M WHITE
IV-7511-20-42	7511-20-42	3 CT TRACK SQUARE 2M ALUM
IV-7511-30-30	7511-30-30	3 CT TRACK SQUARE 3M BLACK
IV-7511-30-31	7511-30-31	3 CT TRACK SQUARE 3M WHITE
IV-7511-30-42	7511-30-42	3 CT TRACK SQUARE 3M SILVER
IV-7511-40-30	7511-40-30	3 CT TRACK SQUARE 4M BLACK
IV-7511-40-31	7511-40-31	3 CT TRACK SQUARE 4M WHITE
IV-7511-40-42	7511-40-42	3 CT TRACK SQUARE 4M SILVER



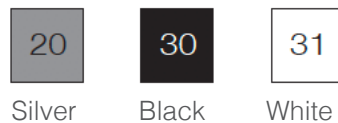
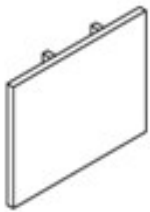
# SURFACE MOUNT AND SUSPENDED SYSTEMS



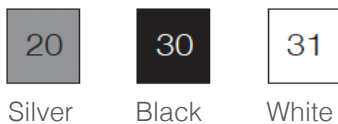
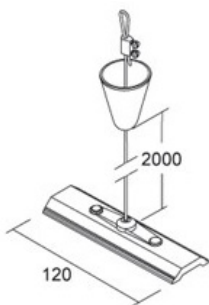
Item	Item Code	Description
IV-7652-10-W20	7652-10-W20	3 CT RIGHT LIVE END SILVER
IV-7652-10-W30	7652-10-W30	3 CT RIGHT LIVE END BLK
IV-7652-10-W31	7652-10-W31	3 CT RIGHT LIVE END WHT
IV-7652-11-W20	7652-11-W20	3 CT LEFT LIVE END SILVER
IV-7652-11-W30	7652-11-W30	3 CT LEFT LIVE END BLK
IV-7652-11-W31	7652-11-W31	3 CT LEFT LIVE END WHT



Item	Item Code	Description
IV-7653-10-W20	7653-10-W20	CENTRAL STRAIGHT JOINT SILVER
IV-7653-10-W30	7653-10-W30	CENTRAL STRAIGHT JOINT BLK
IV-7653-10-W31	7653-10-W31	CENTRAL STRAIGHT JOINT WHT



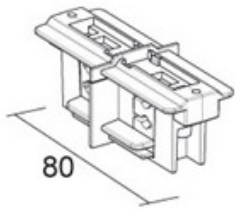
Item	Item Code	Description
IV-7659-00-W20	7659-00-W20	3 CT END CAP SILVER
IV-7659-00-W30	7659-00-W30	3 CT END CAP BLK
IV-7659-00-W31	7659-00-W31	3 CT END CAP WHITE
IV-7659I-00-W30	7659I-00-W30	3 CT DEAD END REC'D BL
IV-7659I-00-W61	7659I-00-W61	3 CT DEAD END REC'D WH



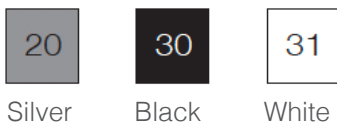
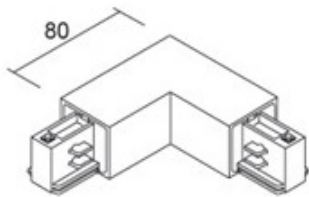
Item	Item Code	Description
IV-7606-00-30	7606-00-30	3 CT SUSPENSION KIT 2M BLK
IV-7606-00-31	7606-00-31	3 CT SUSPENSION KIT 2M WHT
IV-7606-04-00	7606-04-00	SUSPENSION PLATE L=120
IV-7606-06-31	7606-06-31	3 CT AUTO SUSP'N KIT 2M WHT
IV-7606-07-30	7606-07-30	5M SUSP W/LOCKING DEVICE BL
IV-7606-07-31	7606-07-31	5M SUSP W/LOCKING DEVICE WH



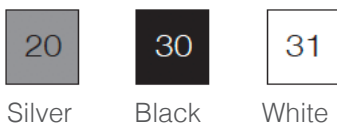
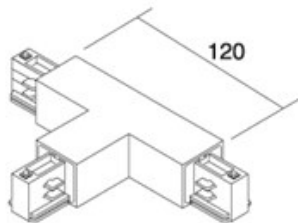
# SURFACE MOUNT AND SUSPENDED SYSTEMS



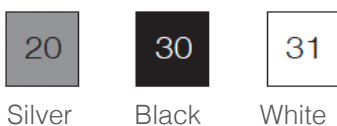
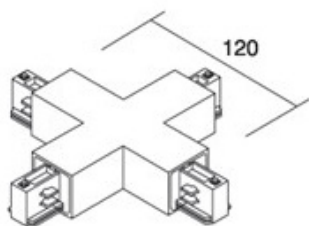
Item	Item Code	Description
IV-7654-10-W30	7654-10-W30	3 CT MECH STRAIGHT JOIN BLK
IV-7654-10-W31	7654-10-W31	3 CT MECH STRAIGHT JOIN WH



Item	Item Code	Description
IV-7655-10-W20	7655-10-W20	3 CT INSIDE L-JOIN SILVER
IV-7655-10-W30	7655-10-W30	INSIDE L-JOINT BLK
IV-7655-10-W31	7655-10-W31	INSIDE L-JOINT WHT
IV-7655-11-W20	7655-11-W20	3 CT OUTSIDE L-JOIN SILVER
IV-7655-11-W30	7655-11-W30	3 CT OUTSIDE L-JOINT BLK
IV-7655-11-W31	7655-11-W31	3CT OUTSIDE L-JOINT WHT



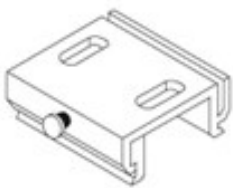
Item	Item Code	Description
IV-7656-10-W20	7656-10-W20	3 CT RIGHT T-JOINT SILVER
IV-7656-10-W30	7656-10-W30	3 CCT RIGHT T-JOINT BLK
IV-7656-10-W31	7656-10-W31	3 CT RIGHT T-JOINT WHT
IV-7656-11-W20	7656-11-W20	3 CT LEFT T-JOINT SILVER
IV-7656-11-W30	7656-11-W30	3 CT LEFT T-JOINT BLK
IV-7656-11-W31	7656-11-W31	3 CT LEFT T-JOINT WHT



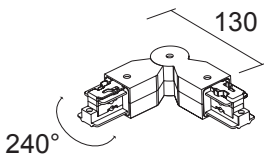
Item	Item Code	Description
IV-7657-10-W20	7657-10-W20	3 CT X-JOIN SILVER
IV-7657-10-W30	7657-10-W30	3 CT X-JOINT BLK
IV-7657-10-W31	7657-10-W31	3 CT X-JOINT WHT



## SURFACE MOUNT AND SUSPENDED SYSTEMS



Item	Item Code	Description
IV-7607-00-00	7607-00-00	CEILING KIT



Item	Item Code	Description
IV-7660-00-W20	7660-00-W20	3 CT ADJUSTABLE COUPLER SILVER
IV-7660-00-W30	7660-00-W30	3 CT ADJUSTABLE COUPLER BL
IV-7660-00-W31	7660-00-W31	3 CT ADJUSTABLE COUPLER WH



Silver

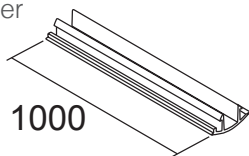


Black



White

Silver



Item	Item Code	Description
IV-7624-00	7624-00	TRACK COVER 1000MM



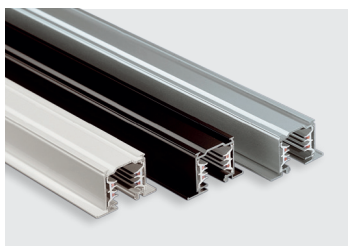
Black



White



## RECESSED MOUNT SYSTEM



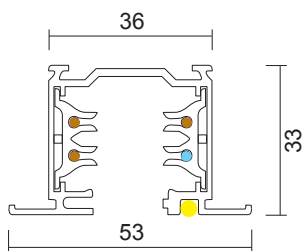
Satin  
Silver



Black

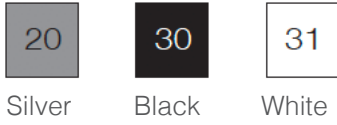
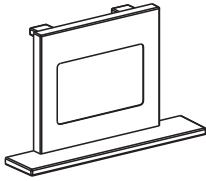


White

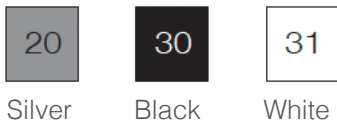
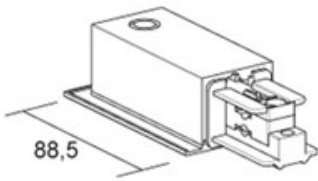


Item	Item Code	Description
IV-7512-10-30	7512-10-30	3 CT TRACK RECESSED 1M BLACK
IV-7512-10-31	7512-10-31	3 CT TRACK RECESSED 1M WHITE
IV-7512-10-42	7512-10-42	3 CT TRACK RECESSED 1M SILVER
IV-7512-20-30	7512-20-30	3 CT TRACK RECESSED 2M BLACK
IV-7512-20-31	7512-20-31	3 CT TRACK RECESSED 2M WHITE
IV-7512-20-42	7512-20-42	3 CT TRACK RECESSED 2M SILVER
IV-7512-30-30	7512-30-30	3 CT TRACK RECESSED 3M BLACK
IV-7512-30-31	7512-30-31	3 CT TRACK RECESSED 3M WHITE
IV-7512-30-42	7512-30-42	3 CT TRACK RECESSED 3M SILVER
IV-7512-40-30	7512-40-30	3 CT TRACK RECESSED 4M BLACK
IV-7512-40-31	7512-40-31	3 CT TRACK RECESSED 4M WHITE
IV-7512-40-42	7512-40-42	3 CT TRACK RECESSED 4M SILVER

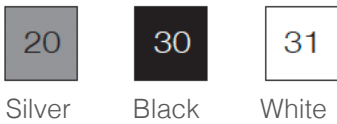
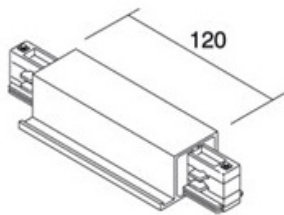
# RECESSED MOUNT SYSTEM



Item	Item Code	Description
IV-7659I-00-W20	7659I-00-W20	DEAD END SILVER
IV-7659I-00-W30	7659I-00-W30	DEAD END BLACK
IV-7659I-00-W31	7659I-00-W31	DEAD END WHITE



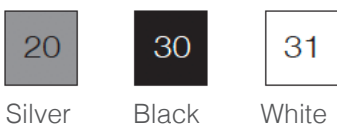
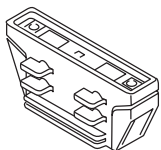
Item	Item Code	Description
IV-7662-10-W20	7662-10-W20	3 CT RIGHT LIVE END REC'D ALU
IV-7662-10-W30	7662-10-W30	3 CT RIGHT LIVE END REC'D BLK
IV-7662-10-W31	7662-10-W31	3 CT RIGHT LIVE END REC'D WH
IV-7662-11-W20	7662-11-W20	3 CT LEFT LIVE END REC'D SILVER
IV-7662-11-W30	7662-11-W30	3 CT LEFT LIVE END REC'D BLK
IV-7662-11-W31	7662-11-W31	3 CT LEFT LIVE END REC'D WHT



Item	Item Code	Description
IV-7663-10-W20	7663-10-W20	3 CT CENTRAL REC STRAIGHT JOINT SILVER
IV-7663-10-W30	7663-10-W30	3 CT CENTRAL REC STRAIGHT JOINT BLK
IV-7663-10-W31	7663-10-W31	CENTRAL REC STRAIGHT JOINT WHT



Item	Item Code	Description
IV-7664-00-48	7664-00-48	3 CT SUSPEN FOR FALSE CEILING



Item	Item Code	Description
IV-7604-10-W30	7604-10-W30	3 CT ELEC STRAIGHT JOINT BLK
IV-7604-10-W31	7604-10-W31	3 CT ELEC STRAIGHT JOINT WHITE



IVELA

**RETAILITE**

For further information on Retailite's full range of bespoke solutions,  
please contact:  
[enquiries@retailite.com.au](mailto:enquiries@retailite.com.au)  
1300 743 780

**GERARD**  
LIGHTING

For further information on Gerard Lighting's full range of lighting  
solutions, please contact:  
[mail@gerardlighting.com.au](mailto:mail@gerardlighting.com.au)  
1300 799 300