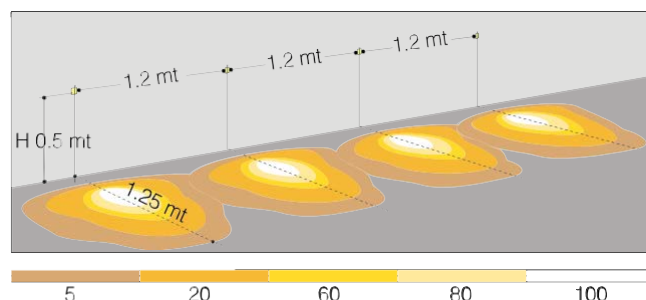
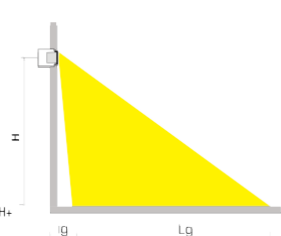
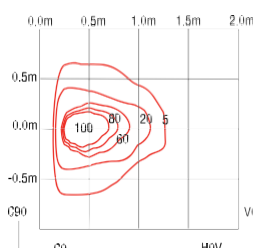
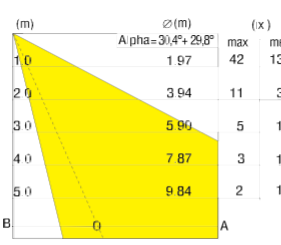
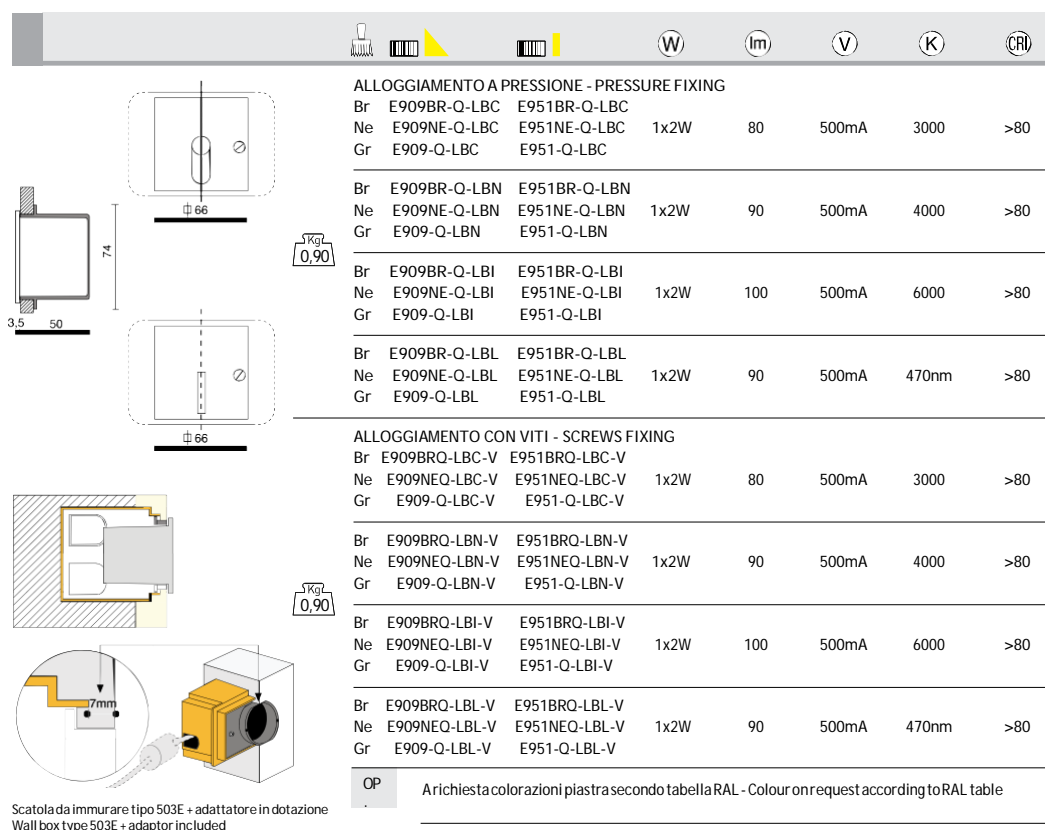
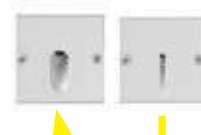
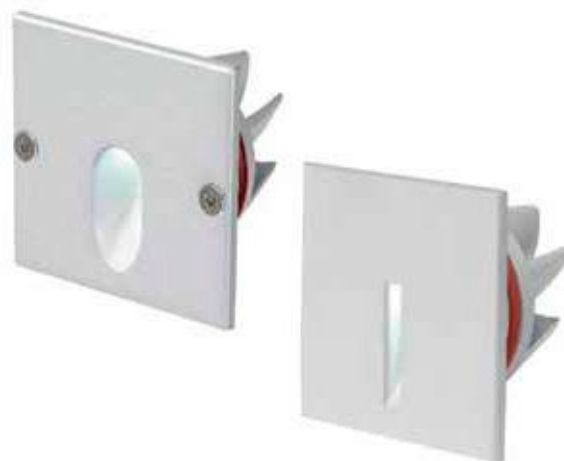


- Wall recessed fitting for supplied electrical boxes type 503E.
- Die-cast aluminium body.
- Powder coated with pretreatment for outdoor use.
- Inox steel screws.
- Body and internal heatsink made of nichel brass.
- Methacrylate lens and gasket gland made of silicone rubber.
- Power cable 0.2 m. long and connectors for harenesses tight wiring supplied.



H mm	Lux Max	Lg mm	g mm
250	140	850	50
500	100	1150	100