



Two Channel DALI Relay Device

General purpose 10A load switching device



www.dignet.net.au



Range DGOZ-RLY-10A-02

Overview

The RAPIX two channel DALI Relay Device is designed specifically for on/off switching of up to 10 Amps per channel of lighting load via DALI commands on a connected DALI line.

The two on-board 240Vac rated relays are each capable of switching a full 10A of LED, fluorescent, incandescent and HID lighting loads, suitable for a wide range of commercial and industrial building applications.

The device includes a large area for terminating all 1.5mm² or 2.5mm² double insulated cables (240Vac supply cables, switched load cables and DALI Line cables).

To maximise relay contact life, the relay unit includes a patented zero cross detection feature. This ensures that when the load is switched on the relay contacts are closed at the ac load voltage zero-crossing point and when switched off the relay contacts are opened at the load ac current zero-crossing point.

The device is fully tested to and complies with DALI standards IEC 62386.

Features

General purpose load switching
(ON and OFF) via received DALI commands

Capable of switching 10AX @
240Vac per channel

Included Neutral and Earth
termination bars

Suitable for mounting in a
ceiling void

Zero crossing point detection
to maximise relay contact life

Optional DIN rail mounting
bracket

Fits through a 90 mm down
light hole

LED indicators (DALI and
power)

Each relay channel consumes

a DALI short address

Each relay channel is able to be
allocated up to 16 DALI Group
Addresses

Each relay channel is able to be
allocated up to 16 DALI Scenes

Short Address, Group Addresses
and DALI scenes configured by
RAPIX Addressing software

Typical Applications

Commercial buildings
Hotels
Health care facilities

Education facilities
Homes

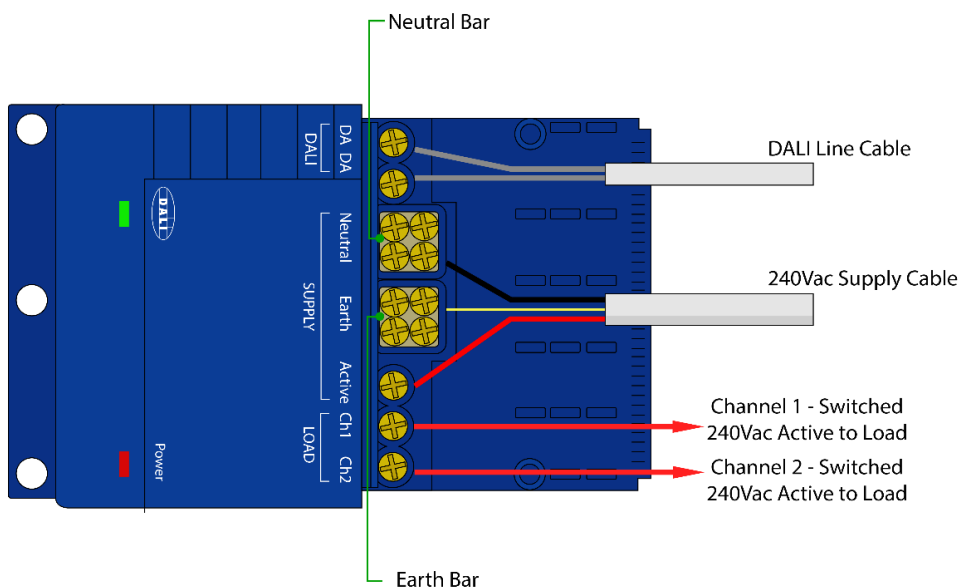
Industrial facilities
Warehouses



Specifications

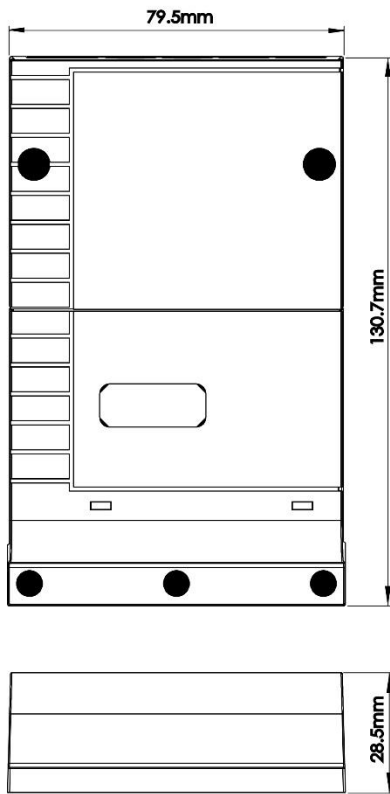
Item Number	DGOZ-RLY-10A-02								
Number of switched outputs	2								
Nominal Mains Supply Voltage	220 – 240V ac								
Mains Frequency Range(s)	47 – 63 Hz								
Electrical Isolation	3.75kV (DALI to Mains)								
Status Indicators	Mains (red LED) DALI (green LED)								
DALI line current draw	2mA								
Load Rating	<table border="0"> <tr> <td style="padding-right: 20px;">Resistive</td> <td>10A per channel</td> </tr> <tr> <td style="padding-right: 20px;">Inductive</td> <td>10A per channel</td> </tr> <tr> <td style="padding-right: 20px;">Fluorescent</td> <td>10A per channel</td> </tr> <tr> <td style="padding-right: 20px;">Motor</td> <td>2A per channel</td> </tr> </table>	Resistive	10A per channel	Inductive	10A per channel	Fluorescent	10A per channel	Motor	2A per channel
Resistive	10A per channel								
Inductive	10A per channel								
Fluorescent	10A per channel								
Motor	2A per channel								
Relay Switch Operations	↑50,000 operations at rated load								
Relay Contact Type	Bifurcated High Inrush								
Relay zero crossing switching detection	Zero voltage detection at relay turn-on utilising patented terminal voltage sensing technique Zero current detection for turn-off load utilising patented terminal voltage sensing technique								
Standby Power	↓500mW								
Dimensions	See separate Diagram								
Mains Terminals	2 x 2.5mm ² maximum per terminal or 3 x 1.5mm ² maximum per terminal								
DALI Terminals	2 x 2.5mm ² maximum per terminal or 3 x 1.5mm ² maximum per terminal								
Weight	175g								
Operating Temp. Range	0-50°C								
Operating Humidity Range	95% ↓ 95% RH non condensing								
Mounting Arrangement	Surface mount via 6mm mounting holes , DIN rail mounting (with optional DIN rail mounting bracket)								
Housing Material type	Flame Retardant Polycarbonate								
IP Rating	IP20								
Compliance Marks	CE, RMC, DALI								

Connections

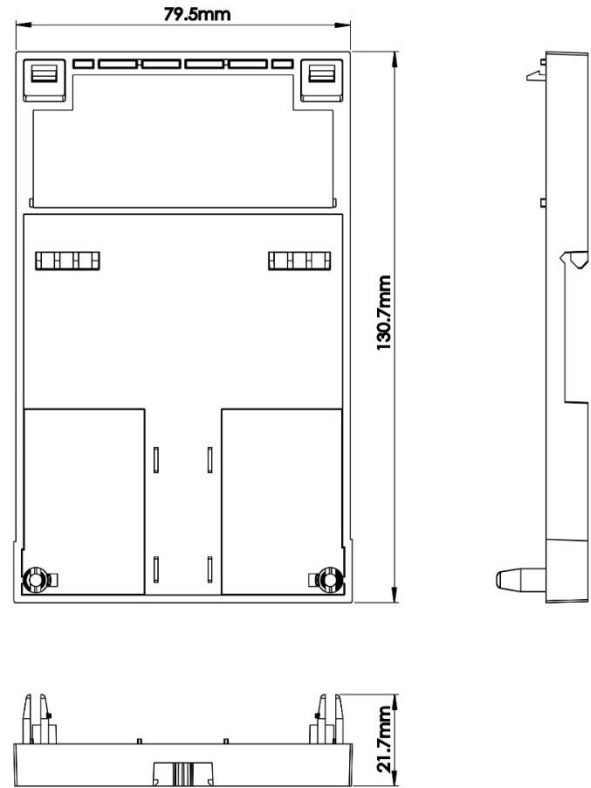




Dimensions



Dimensions – DALI Relay Device



Dimensions – Optional Mounting Bracket

Approvals & Compliance

IP20  

CONTACT INFORMATION

Web	www.diginet.net.au	
General Enquiries:	1300 95 DALI (3254)	sales@diginet.net.au
Technical Services:	1300 95 3244	support@diginet.net.au
Fax:	1300 95 3257	

PRODUCT OF GERARD LIGHTING PTY LTD

ABN – 89 095 788 864
96-112 Gow Street
Padstow NSW 2211



A BRAND OF THE GERARD LIGHTING GROUP

The product includes a **TWO-YEAR WARRANTY** against manufacturing defects. Fully warranty terms can be found here www.diginet.net.au

COPYRIGHT. ©This document is copyright to Gerard Lighting Pty Ltd. Except as permitted under relevant law, no part of this user and installation guide may be reproduced by any process without written permission of and acknowledgement to Gerard Lighting. **DISCLAIMER.** Gerard Lighting Pty Ltd (Gerard Lighting) reserves the right to alter the specifications, designs or other features of any items and to discontinue any items at any time without notice and without liability. While every effort is made to ensure that all information in this user and installation guide is correct, no warranty of accuracy is given and Gerard Lighting shall not be liable for any error. **TRADEMARKS.** The identified trademarks and copyrights are the property of Gerard Lighting Pty Ltd unless otherwise noted.